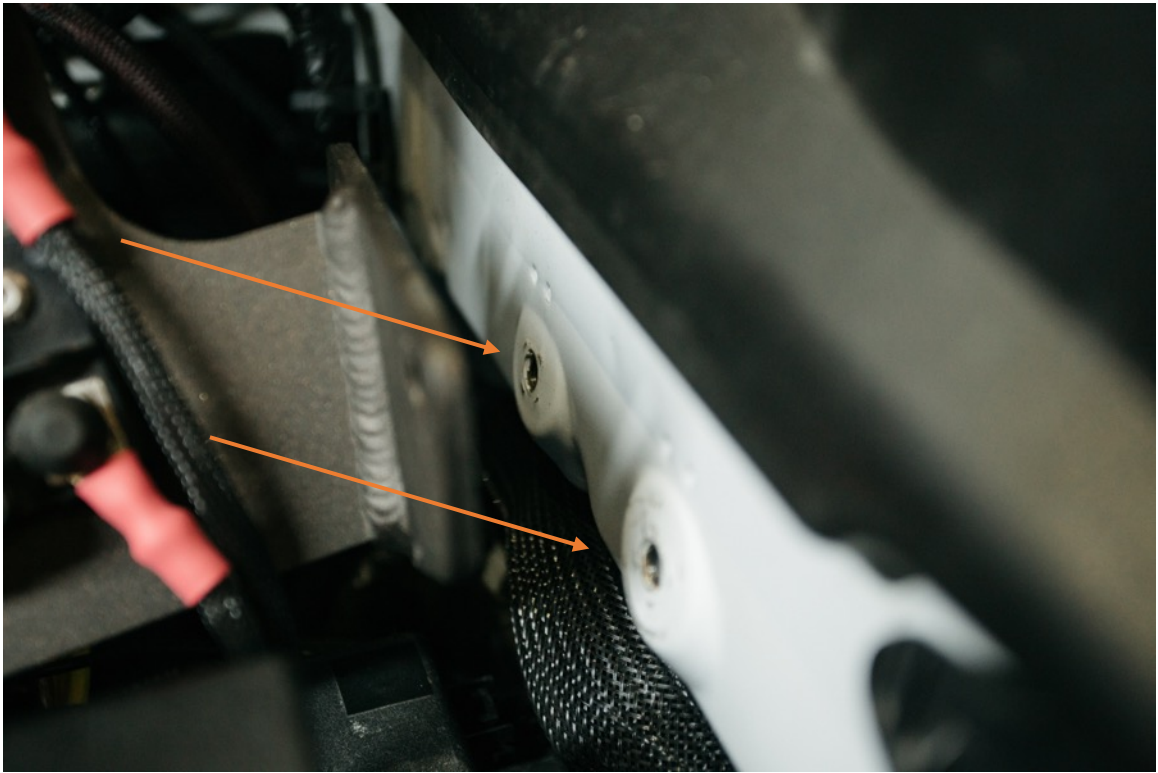


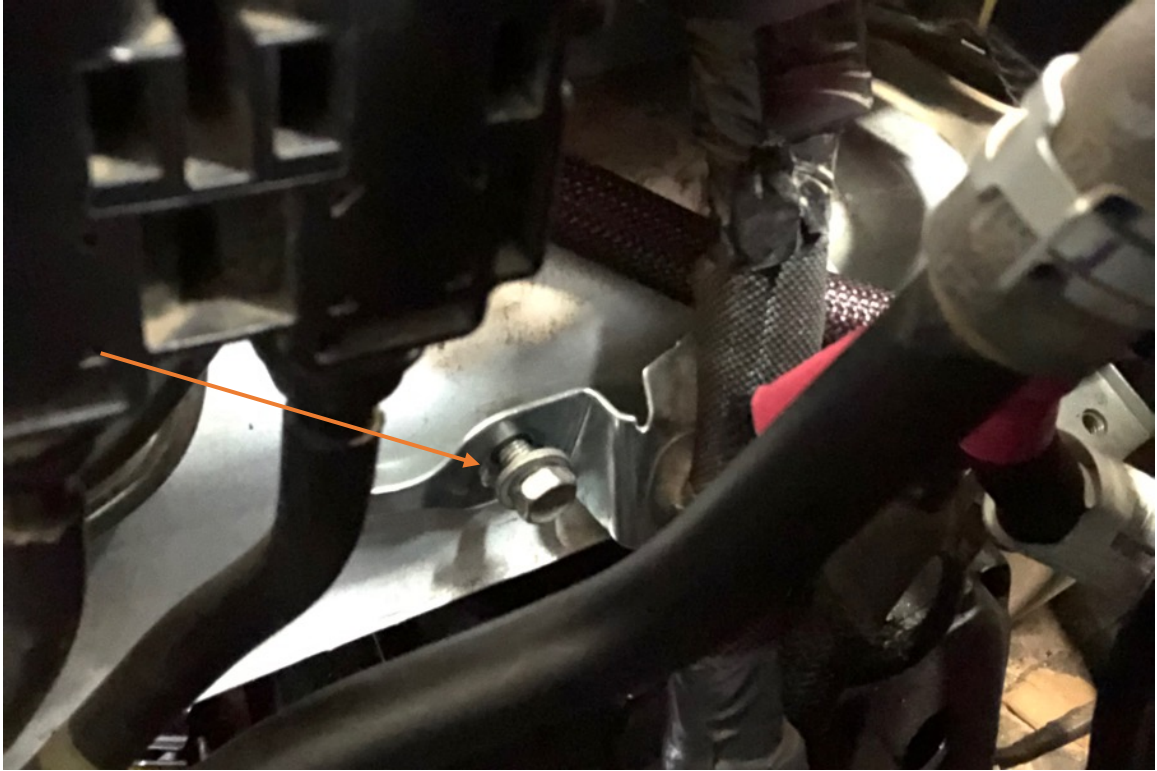
GEN 3 TACOMA AUXILIARY ELECTRICAL MOUNTING BRACKET

Fits REDARC BCDC and 2 breakers easily

1. *NOTE: This is for Driver's Side application only.* First, align the bracket to the top side rail of the drivers side, so the bracket is flush with the factory mounting holes as seen in the following photo.



2. Follow the bracket leg down the engine compartment to find the hex head bolt near the right-hand side wheel well. This will mount the bottom portion of the bracket. Remove the bottom hex head bolt as seen in the photo. You will need to reuse this bolt.



3. Set bracket back into open space so bracket holes line up with factory mounting points. Use product supplied hardware to secure top portion of bracket, and reuse factory hex head for the bottom of the bracket.



4. Tighten all hardware and mount desired electrical equipment. Enjoy!

