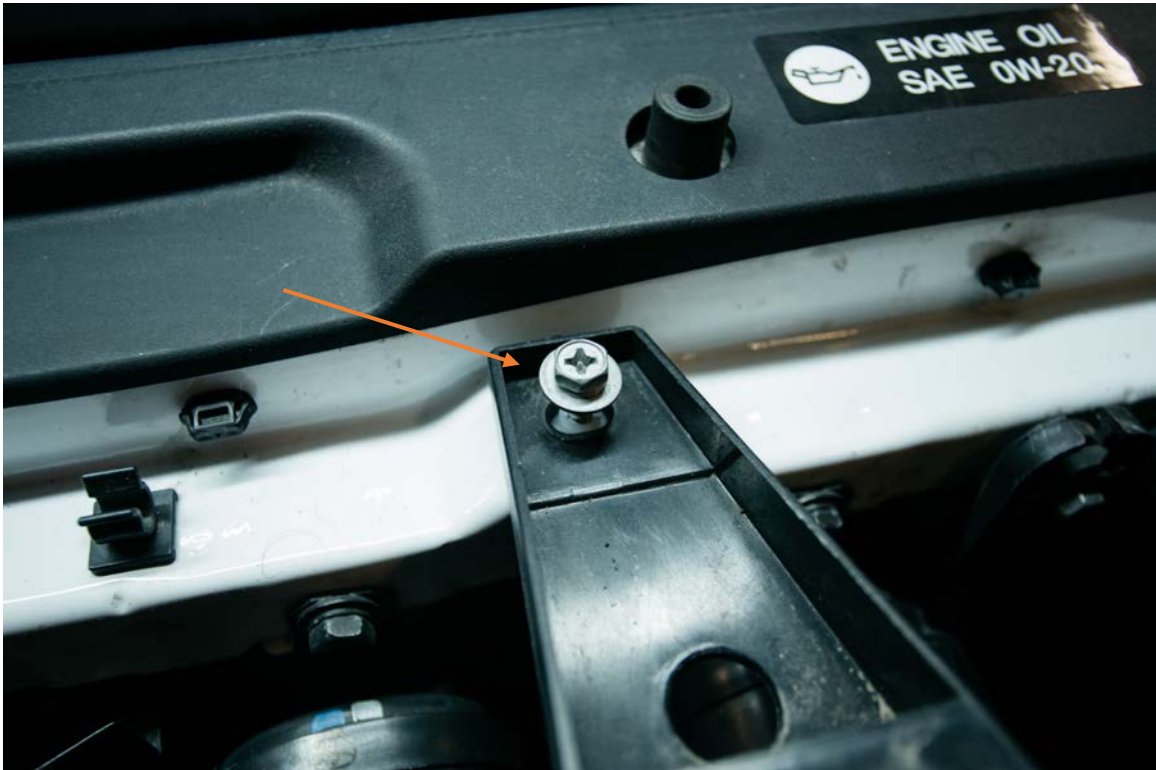


GEN 3 TACOMA TWIN AIR COMPRESSOR HIDDEN GRILL MOUNT

Designed specifically for the ARB Twin Air Compressor

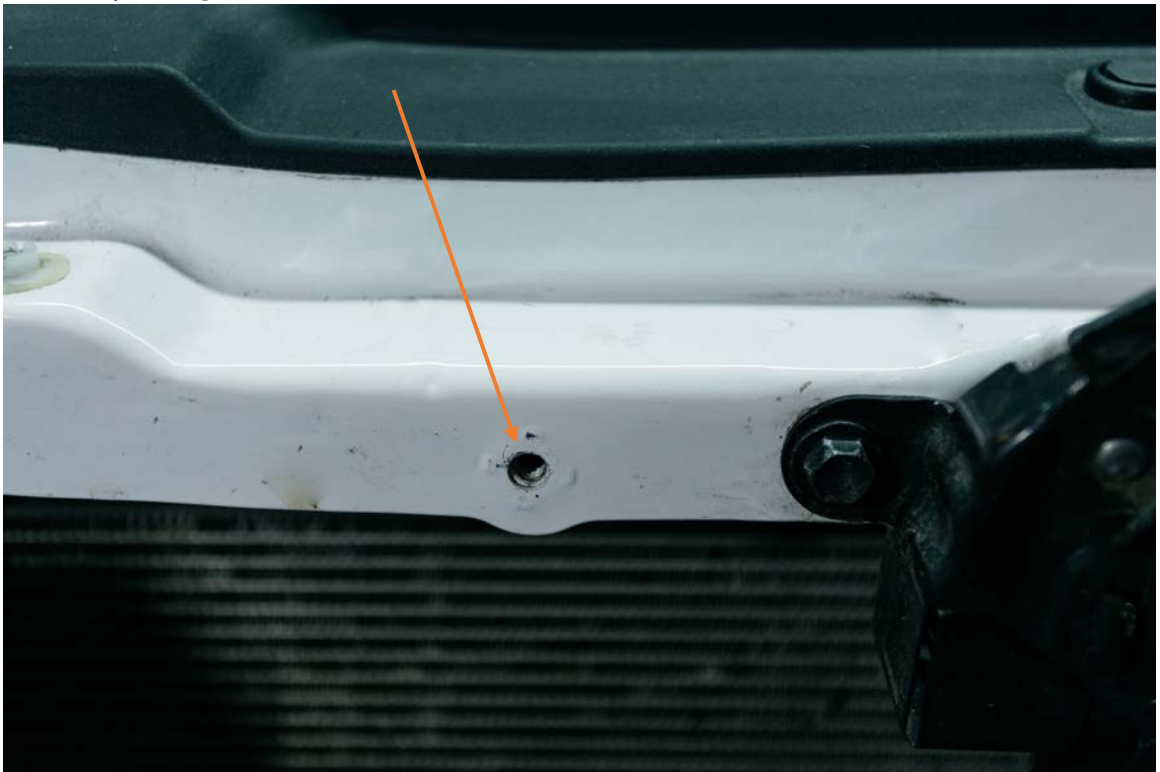
1. OPTIONAL: For ease of install, begin by removing the grill off of your Gen 3 Tacoma. Do so by removing the two top screws (as seen in photo 1) and the two hood clips (as seen in photo two.) The bottom of the grill is held on by snap locks, will simply snap off as you lift out.

https://www.youtube.com/watch?v=1z_sRld8esl

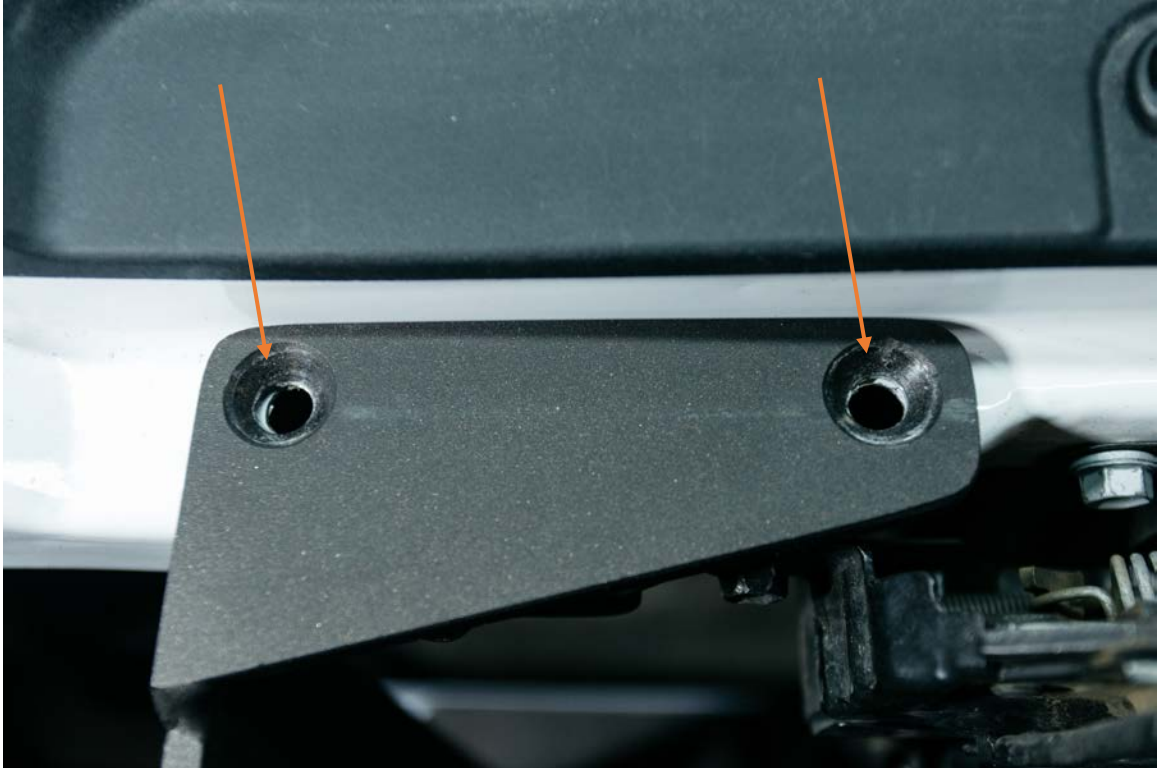




2. Find the factory threaded hole (6mm) just to the left (passenger side) of the hood-opening mechanism.



3. Set bracket up into the factory hole and insert a 6mm button head bolt to hold in place. You will need to drill the two top holes out. Drill holes with bracket secured in place.



4. Insert 2 flat allen head bolts into the newly drilled holes, and finger tighten with flat washers and nylock nuts on the underside of the frame of the truck.



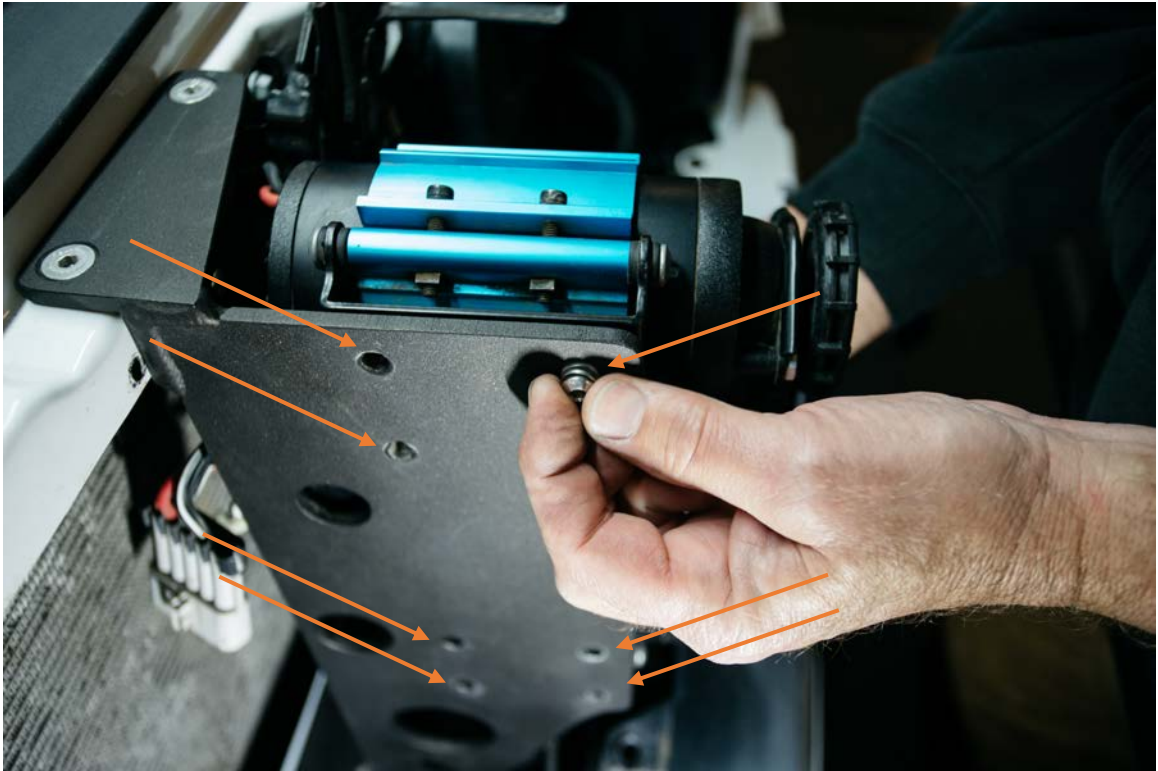
5. With the top bracket secure, ensure the holes align with the factory holes found on the bottom frame. Insert the back plate within the frame, align the holes, and insert the 8mm button head bolt with a lock washer and flat washer into the bracket - tightening through the back plate. Do this for both holes on

the bottom frame.



6. Check all your bolts and tighten all to secure.
7. Finally, install the ARB Twin Air Compressor on the drivers side of the bracket (facing the hood latch.) The compressor already has mounting holes, and our brackets line up perfectly to accept it. Insert the 8 small button heads and

washers to secure the bracket.



8. Connect or run all necessary wires to power the compressor. Then, reinstall the grill mount in reverse order to taking it off - placing the bottom end in first, then aligning the rest of the grill with the bumper and headlights. Reinstall the

hood clips and hex head screws.

